

Your total paints & coatings
solutions provider

JUNO



Your trusted partner

With over 94 years of coating manufacturing experience, JUNO provides a full range of quality products, services and colours to help you reduce risk and get the job done right.

Our experience in handling large, time-bound projects with end-to-end solutions, along with our extensive product portfolio, has earned us many accolades and trust.

Take a look at some of the many projects we've been a part of in Ireland in recent period.



Case Studies

A clip of recent projects - Ireland

JUNO

JUNO PAINTS - Industrias JUNO S.A.

Tomorrow's paint today™



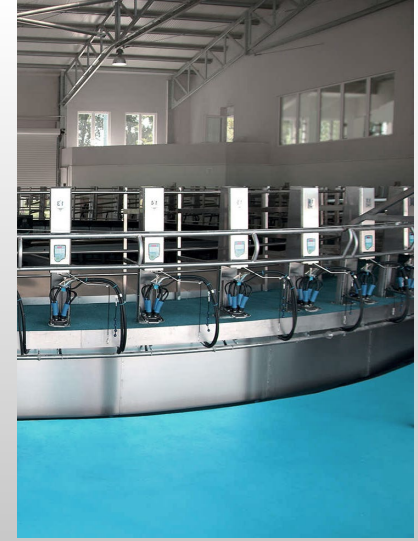
Dublin Airport - Pier 3 Passenger Boarding Bridges (PBB)

Repairs and upgrading of external finish of airbridge tunnels, roof and rotundas Dublin Airport using JUNO protective paint system in compliance with ISO EN 12944 – to C4 and C5 specifications.



Milking Parlour – Kildare Farm

Full refurb of a milk farm in Kildare using JUNO's Chlorinated Rubber (Dynamol) in Milking Parlour Blue..



JUNO PAINTS - Industrias JUNO S.A.

Tomorrow's paint today™



Maynooth Education Campus -

Exterior paint system for complete building. Interior and exterior paint systems.



*Contact us for more reference projects.

JUNO PAINTS - Industrias JUNO S.A.

Tomorrow's paint today™



Supervalu Portlaise

Renovation of car park facilities using JUNO's Chlorinated rubber coating – Dynamol and Pisciclor.



Before



Before



After



After

JUNO PAINTS - Industrias JUNO S.A.

Tomorrow's paint today™



Grace Park Manor – Dublin

Our products have been used in a variety of applications, from state-of-the-art office buildings to world-renowned stadiums. Let our ever-growing portfolio help inspire your next project. For more information about this particular project, do not hesitate to contact our Prescription/Commercial Department. (prescriptions@junopaints.ie)



*Contact us for more reference projects.

St. Mary's medieval Mile Museum – Kilkenny

The painting and treatment products for this award-winning project were supplied by Juno Paints. Juno's excellent Silicato (Silicate Coating), Mineral Primer, N-5 (Washable Matt Emulsion) and Hidrocril Sealer products ensured achieving the perfect finish and highest standard as per architect's specifications. For more information about this particular project, do not hesitate to contact our Prescription/Commercial Department. (prescriptions@junopaints.ie)



JUNO PAINTS - Industrias JUNO S.A.

Tomorrow's paint today™

JUNO

The Seabank House Gastro Pub – Dublin 3

The exterior boundary walls and gateways, (c.1900,) comprising pair of rendered piers with elliptical-headed gateway to centre having cast-iron gates, curvilinear gable over with round-headed recessed niche to centre and cut-stone finials, have been protected by JUNO's Elastiflex elastomeric Crack-bridging paint.



*Contact us for more reference projects.

JUNO PAINTS - Industrias JUNO S.A.

Tomorrow's paint today™



Bloomfield House Hotel, Belvedere, Mullingar, Co. Westmeath

The exterior of this extensive prominent hotel has been treated with Bikril Masonry Coating as well as Junorapid alkyd enamel on the railings.



JUNO PAINTS - Industrias JUNO S.A.

Tomorrow's paint today™



The National Forensic Mental Health Service (NFMHS), Portrane

The new National Forensic Mental Health Service (NFMHS) Hospital at Portrane, Co. Dublin has been specified with JUNO's products. It is under construction in 2017/18 and will have JUNO's Hidrocril, Dynapok Agua -WB Epoxy, and N-5 interior emulsion on its walls, floors and ceilings.



*Contact us for more reference projects.

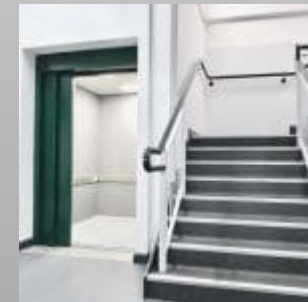
JUNO PAINTS - Industrias JUNO S.A.

Tomorrow's paint today™



Eco-Store Fresh Food Centre, Castlewellan

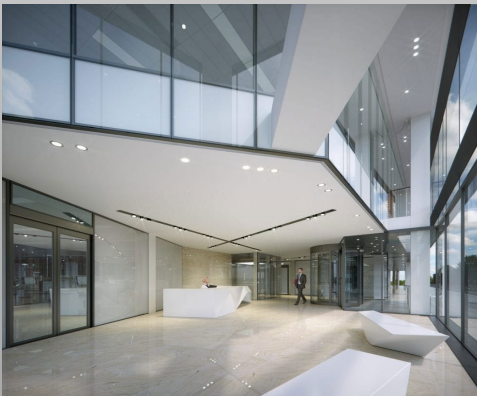
This Construction of a new eco-friendly super market with warehouses, staff facilities and office space above executed by Leo Matheson Limited; was specified to be all ecological. All facilities were treated with B-7 Ecological and J-25 quality paints.





Sharp Building – Hogans Place, Dublin

This modern building designed by KMD Architecture occupies a prominent corner of the city. In line with its modern look and feel JUNO's N5 Washable Matt emulsion and Aqualac Waterbased Trim enamel has been used throughout this office building. Project completion in 2018.



JUNO PAINTS - Industrias JUNO S.A.

Tomorrow's paint today™



Barretstown Children's Charity Hospital

Our products have been used in a variety of applications, from state-of-the-art office buildings to world-renowned stadiums. Let our ever-growing portfolio help inspire your next project.

For more information about this particular project, do not hesitate to contact our Prescription/Commercial Department. (prescriptions@junopaints.ie)



*Contact us for more reference projects.

JUNO PAINTS - Industrias JUNO S.A.

Tomorrow's paint today™



Aldi Blanchardstown – Ireland

Full on interior repaint with Junoprof interior paint system.



*Contact us for more reference projects.

JUNO PAINTS - Industrias JUNO S.A.

Tomorrow's paint today™



Castlewarden Golf Club – Castlewarden

Full on exterior repaint with Juno Masonry paint system.



Before



After

Catholic Church of the Immaculate Conception, Church Road, Ballymore Eustace East

The exterior boundary walls and gateways, (c.1900,) comprising pair of rendered piers with elliptical-headed gateway to centre having cast-iron gates, curvilinear gable over with round-headed recessed niche to centre and cut-stone finials, have been protected by JUNO's Elastiflex elastomeric Crack-bridging paint.



JUNO PAINTS - Industrias JUNO S.A.

Tomorrow's paint today™



KPI Refrigeration & Catering - Kilkenny *The exterior boundary*

Full on exterior repaint with Junokril Satin Masonry paint and Primerlite Pliolite primer coating.



Before



After

JUNO PAINTS - Industrias JUNO S.A.

Tomorrow's paint today™



Mount Anville Primary School – Stillorgan – Dublin

Polyurethane coating (Juonretano 2/C) on walls and PVC doors and windows.



Before



After



JUNO PAINTS - Industrias JUNO S.A.

Tomorrow's paint today™



Kilternan Community Centre -

Our products have been used in a variety of applications, from state-of-the-art office buildings to world-renowned stadiums. Let our ever-growing portfolio help inspire your next project.

For more information about this particular project, do not hesitate to contact our Prescription/Commercial Department. (prescriptions@junopaints.ie)



JUNO PAINTS - Industrias JUNO S.A.

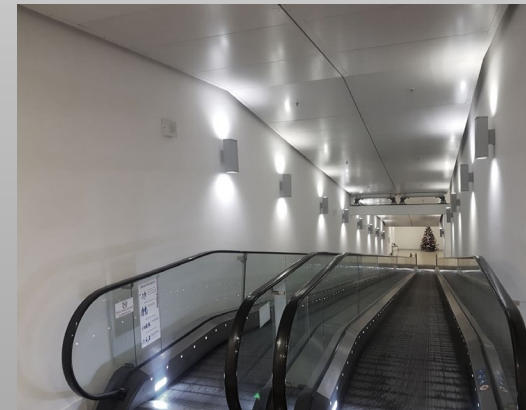
Tomorrow's paint today™



Portlaoise Shopping Centre

Our products have been used in a variety of applications, from state-of-the-art office buildings to world-renowned stadiums. Let our ever-growing portfolio help inspire your next project.

For more information about this particular project, do not hesitate to contact our Prescription/Commercial Department. (prescriptions@junopaints.ie)



*Contact us for more reference projects.

JUNO PAINTS - Industrias JUNO S.A.

Tomorrow's paint today™



Blanchardstown Shopping Centre

Our products have been used in a variety of applications, from state-of-the-art office buildings to world-renowned stadiums. Let our ever-growing portfolio help inspire your next project.

For more information about this particular project, do not hesitate to contact our Prescription/Commercial Department. (prescriptions@junopaints.ie)



JUNO PAINTS - Industrias JUNO S.A.

Tomorrow's paint today™



Treacy's Hotel Enniscorthy

All interior and exterior decorative and protective paints and coatings were supplied by JUNO to this historic hotel in Ireland. Junoprof for interior and Junokril Satin finish for the whole exterior were used.



JUNO PAINTS - Industrias JUNO S.A.

Tomorrow's paint today™



River Court Hotel Kilkenny

All exterior decorative and protective paints and Coatings were supplied by JUNO to this historic hotel in Kilkenny Ireland. Junokril Satin and Primerlite Pliolite primer was used.



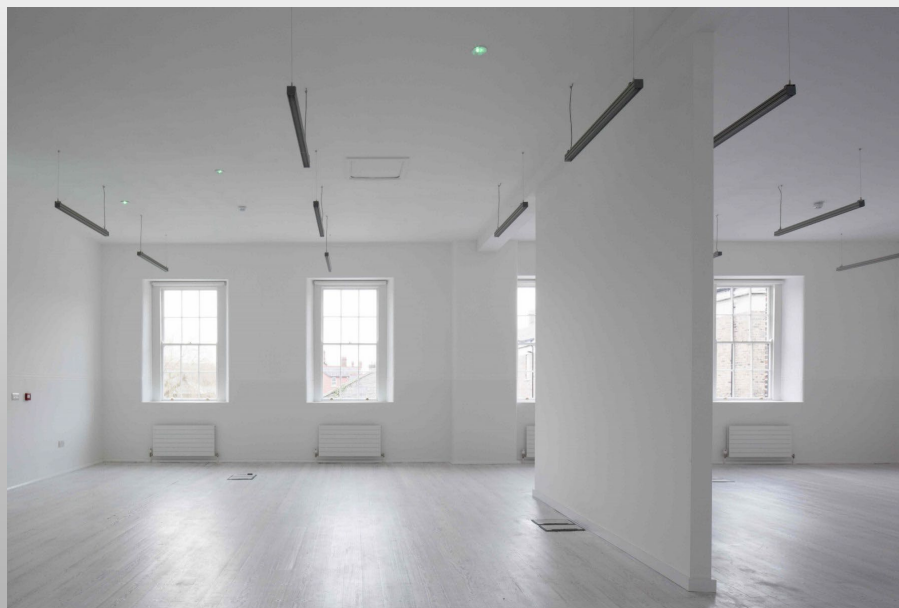
After



Before

Military Archives Building – Cathal Brugha Barracks - Dublin

JUNO has supplied its paint to the new Military Archives facilities in Rathmines, Dublin. The paints were supplied to decorate a new building for the storage of archival material, and the refurbishment of an adjoining building which will house visitor facilities. Products used: Silicate Paints and Interior primers and finish coatings such as J-25 and Hidrocril.



St. Luke's General Hospital, Carlow/Kilkenny

Juno in collaboration with Pro Painters from Ireland, has been chosen as one of the main paint suppliers to the new Accident and emergency Dept., Out-Patient Dept., Pathology Dept. and a new Training & Education Centre, Entrance Concourse, Day Services Unit and Community Day Hospital.

The colourful friendly environment was provided by finishing with JUNO's high quality products including specialty hygienic paints.



JUNO PAINTS - Industrias JUNO S.A.

Tomorrow's paint today™



Charlemont Square Offices/Campus



*Contact us for more reference projects.

JUNO PAINTS - Industrias JUNO S.A.

Tomorrow's paint today™



Charlemont Square Apartments





Bernal Building – University of Limerick

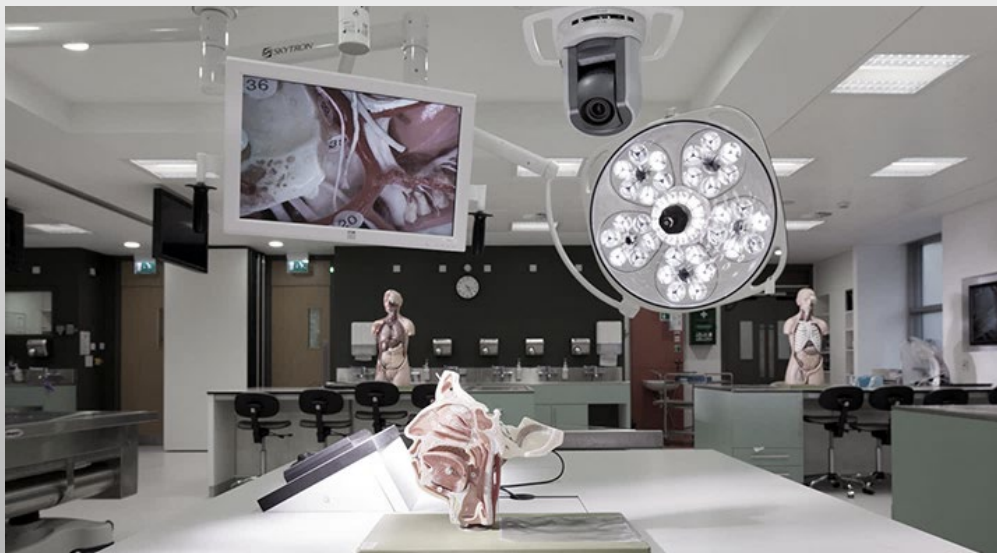
The Bernal Building Project is a 7,459m2 facility housing fully-equipped laboratories to enable teaching and research. In addition to significant laboratory space the building provides offices, teaching facilities including seminar rooms and a 200 seat lecture hall. JUNO has been selected as the preferred option to be used for this ambitious project. J-25 and N-5 emulsions were used as topcoats. Hidrocril was used on all blockwork as a finishing dust sealer.



University College Cork – Western Gate Laboratories

Our products have been used in a variety of applications, from state-of-the-art office buildings to world-renowned stadiums. Let our ever-growing portfolio help inspire your next project.

For more information about this particular project, do not hesitate to contact our Prescription/Commercial Department. (prescriptions@junopaints.ie)



JUNO PAINTS - Industrias JUNO S.A.

Tomorrow's paint today™



Scoil na Trionoide, Doon Secondary School, Ireland

Juno in collaboration with Pro Painters from Ireland, has been chosen as the main paint supplier to the new Secondary school in Doon Ireland. This is one of several schools painted with JUNO paints in Ireland between 2013-2015. Exterior: Junokril in Red, Grey and White.



*Contact us for more reference projects.

JUNO PAINTS - Industrias JUNO S.A.

Tomorrow's paint today™



Scoil an Chlochair Kilbeggan National School, Ireland

Elastiflex



Before



After



JUNO PAINTS - Industrias JUNO S.A.

Tomorrow's paint today™



Des Kelly Interiors, Dublin Logistical Depot - Ireland

Imprimax, Junopoxi, Junoretano, Junolac AO, Dynamol



Before



After



JUNO PAINTS - Industrias JUNO S.A.

Tomorrow's paint today™



Signacare Bunclody Nursing Home

This luxurious nursing home, initially opened as a Hotel set in Bunclody, designed by Beer & Associates was painted with Bikril on the exterior and Junoprof on the interior upon renovation and transformation into a nursing home.



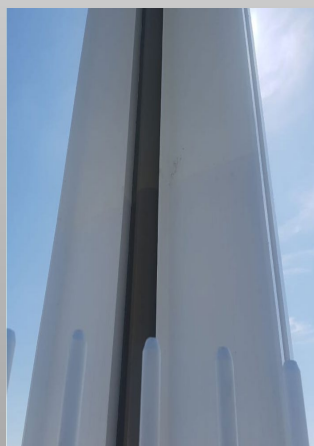
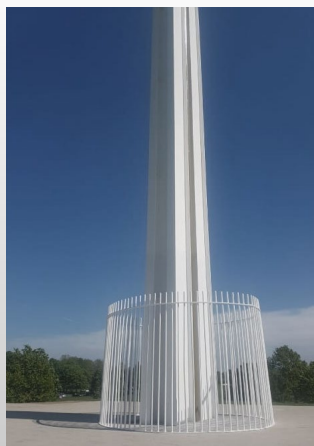
JUNO PAINTS - Industrias JUNO S.A.

Tomorrow's paint today™



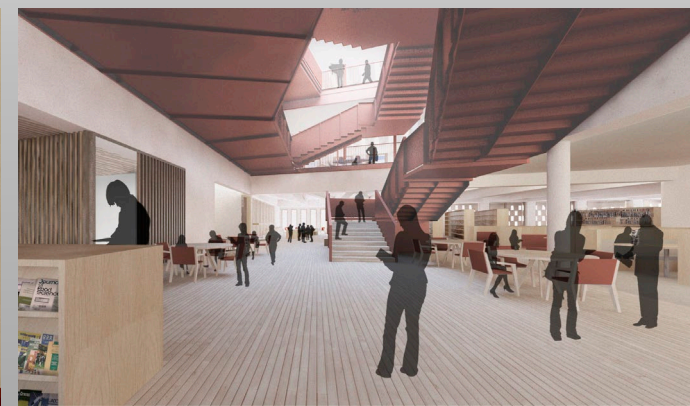
Papal Cross – Phoenix Park - Dublin

To protect the papal cross in Phoenix park with a long-lasting anti-graffiti coating JUNO supplied a coating for this exact purpose – a 2-pack Anti-graffitti coating.



Grangegorman Academic Hub, Dublin - Ireland

The Academic Hub is a landmark building at the heart of Technological University Dublin's Grangegorman Campus. Designed by architects O'Donnell & Tuomey – this modern and prestigious building carries Juno's certified paint finishes throughout. The buildings include a lively ground floor with student services, a café, exhibition space and Learning Commons. On the upper levels will be the new Library for the Campus.



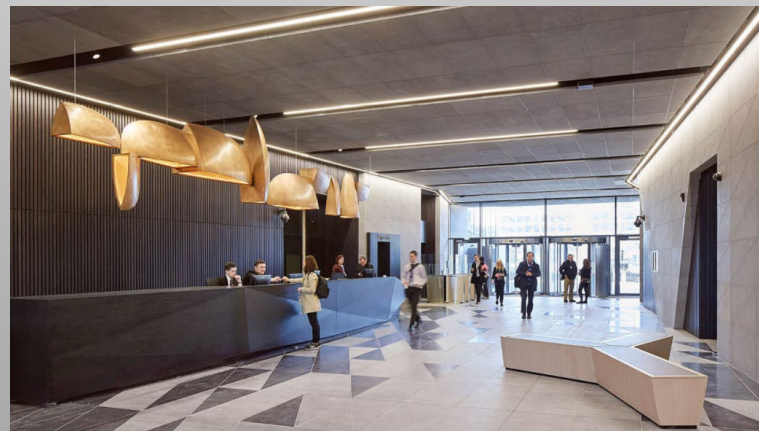
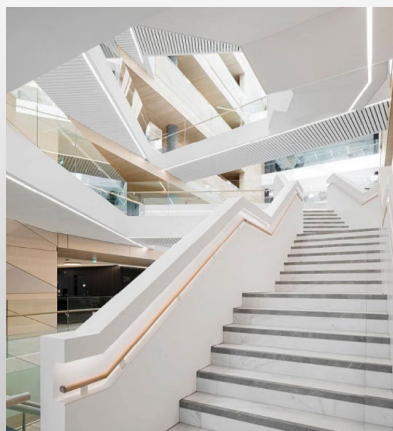
JUNO PAINTS - Industrias JUNO S.A.

Tomorrow's paint today™



The Central Bank of Ireland - Dublin

The Central Bank of Ireland's new headquarters in Dublin's Docklands is a renewed and revitalised manifestation of the institution and its functions. The internal transformation of the building blends flexible and efficient open plan offices with a variety of collaborative and collision spaces that create an innovative working landscape for the Bank's 1,450 employees. All its interior was coated with JUNO's EPD certified N-5 Emulsion Paint.



*Contact us for more reference projects.

JUNO PAINTS - Industrias JUNO S.A.

Tomorrow's paint today™



Rathmines Garda Station- Dublin 6

Interior Refurbishment of Rathmines Garda Station in Dublin. JUNO's N-5 Certified interior washable emulsion and Junoplus Gloss emulsion paint was used to give this police station a durable washable finish and added protection.



JUNO PAINTS - Industrias JUNO S.A.

Tomorrow's paint today™



Terenure Garda Station- Dublin 6

Interior Refurbishment of Rathmines Garda Station in Dublin. JUNO's N-5 Certified interior washable emulsion and Junoplus Gloss emulsion paint was used to give this police station a durable washable finish and added protection.



JUNO PAINTS - Industrias JUNO S.A.

Tomorrow's paint today™



Gordon Hegarty & Sons Ltd. - Carlow

*Durable floor and wall coating to the showroom and warehouse of this farmMachinery Retailer in Carlow.
JUNO's Castor-N on the walls and the Junopoxi 2-pack epoxy and Imprimax floor primer were used here.*



JUNO PAINTS - Industrias JUNO S.A.

Tomorrow's paint today™



McDonald's Restaurants – Lucan, Dublin

Drive-in grounds were painted with the durable Dynamol Chlorinated Rubber coating in Standard JUNO Red colour.



Before



After



JUNO PAINTS - Industrias JUNO S.A.

Tomorrow's paint today™



Apple HQ facilities Cork

At Apple's Hollyhill location JUNO supplied Washable Matt interior emulsion (N-5 and J-25) to several office locations, the gym facilities and lobby areas. Project completed in October 2015.



JUNO PAINTS - Industrias JUNO S.A.

Tomorrow's paint today™



PG McGillion Motors

Junoretano 2-pack polyurethane for a refresh of façade of building at McGillions in Strabane – Northern Ireland.



JUNO PAINTS - Industrias JUNO S.A.

Tomorrow's paint today™



Google Data Centre Dublin, Ireland

Juno paint was used in some of the refinishing of Google's first data centre in Baldonnell Road, Dublin, including the Dynapok WB Epoxy and N-5 Interior Emulsion.



JUNO PAINTS - Industrias JUNO S.A.

Tomorrow's paint today™



Killashee House Hotel Naas, Ireland

Juno paint was used on all exterior joinery, woodwork and window frames on this historical building. Product used; Junoretano 2K Polyurethane in client specified colour.





EUSKADI
BASQUE COUNTRY

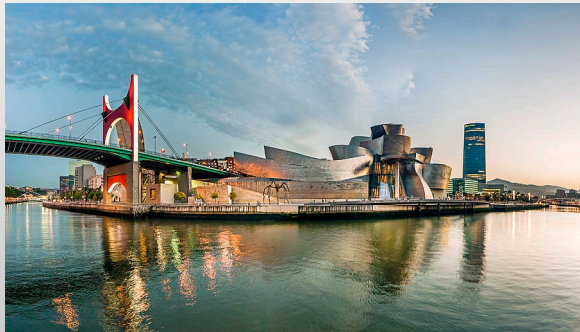
Supplier to award winning
enowned projects worldwide

JUNO



Case Studies

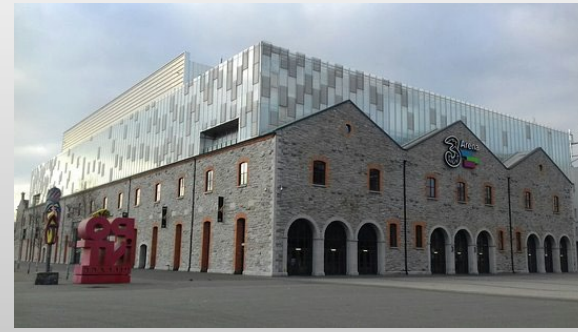
Our products have been used worldwide in a variety of applications, from state-of-the-art office buildings to world-renowned stadiums. For more information about projects in Ireland or other countries, do not hesitate to contact our Prescription/Commercial Department. (prescriptions@junopaints.ie)



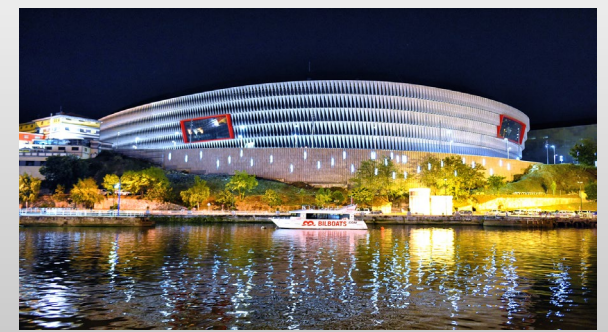
Guggenheim Museum, Bilbao - Spain



The National Forensic Mental Health Service (NFMHS),
Portrane - Ireland



3 Arena, Dublin - Ireland



San Mames Football Stadium Bilbao - Spain



St. Mary's Medieval Mile Museum, Kilkenny - Ireland



University of Limerick – Bernal Institute, Limerick - Ireland



Maynooth University Academic Facilities, Kildare - Ireland



Scoil na Tríonóide Naofa, Doon, Co. Limerick - Ireland



Pioneers in taking
care of the environment

JUNO

JUNO is the first paint manufacturer to obtain the EPD
(Environmental Product Declaration) for its entire interior and exterior product
range (46 products).

Ecological solutions

Your reputation depends on getting the job done, and getting it done right. Today, in order to exceed your customers' expectations, not only does your paint need to have great coverage and durability, it must meet a growing list of national, regional, local and customer-driven regulations. JUNO Paints™ offers a variety of zero- or low-VOC* products as well as hygienic coatings, assisting architects, building owners, homebuilders and professional painters in being green. We are committed to offering products that meet the most stringent regulatory standards while delivering the performance you and your customers expect. With third party certifications we prove that promises are always delivered.



EPD

The International EPD® System is a global programme for environmental declarations based on ISO 14025 and EN 15804 that assesses the environmental impact of the life cycle of a product. Environmental Product Declarations (EPD) present transparent, verified and comparable information about the life-cycle environmental impact of products. JUNO products contribute to meet the standards of sustainable building that are imposed in all areas such as public works, private construction projects, rehabilitation work, decoration etc. It is about analysing the life cycle of a material and offering this information for project decision making and execution of works. The system works on for construction products across Europe and beyond.



THE INTERNATIONAL EPD® SYSTEM

LEED & BREEAM

The EPD life cycle approach, the transparent disclosure of relevant impact categories and the independent verification allows for environmental declarations in building rating systems and sustainable building certification schemes such as BREEAM and LEED. So by obtaining product-specific EPD declarations you get with JUNO products you will be able to accumulate more points for your project.



ISO CERTIFIED

JUNO Paint products are all produced under ISO 9001 and ISO 14001 controlled and certified conditions. JUNO assures stakeholders that our environmental management system meets international industry specific environmental standards. Our ISO 14001 environmental certification provides a framework for environmental management best practice in

- Minimizing our environmental footprint
- Diminish the risk of pollution incidents
- Provide operational improvements
- Ensure compliance with relevant environmental legislation
- Develop their business in a sustainable manner.



A modern, multi-story building with a mix of light-colored wood paneling and white walls. Large windows with black frames are visible, some showing interior lights. The building has a geometric, boxy design with cantilevered sections.

We're here to help.
Contact us!

JUNO



Our services to sites

Products alone can't be successful unless they are properly selected and managed. That's why we, in collaboration with trusted partners, offer a full range of services to help you ensure that your overall approach to completing your project is continually optimized.

Fast Delivery

Supporting site teams with urgent and important deliveries is one of the most valuable features to the clients of On-Site Support. We offer same-day and next-day deliveries on a wide range of products. With careful planning we can also provide on—time deliveries.

One Source for all needs

With one of the market's most diverse product portfolio we can help you to reduce your sourcing needs to one efficient supplier. JUNO Paints also understands that sometimes, supplies and equipment have to be modified to suit the parameters of a specific requirement.

Prescriptions

We will provide you with the support and guidance you need to ensure your work exceeds client expectations. Our prescription service provides you with an array of tools from product advice to application recommendations, professional prescription documents, DOP's, product warranties etc.etc.

On-site support

Whenever you need us on-site we will endeavour to be there with a 'can-do' attitude. When we encounter challenges, we work together to find the solution both before, during and after your project execution.



Contact us for more information

Whether small or large projects in hand, JUNO Paints provides free technical advice, support and specification services to architects, specifiers, professional tradesmen and construction companies.

For more information do get in touch for more information, or to set up a meeting with one of our consultants.

Juno Paints Ltd. Ireland (Subsidiary of Industrias JUNO S.A.)

E-mail: info@junopaints.ie or prescriptions@junopaints.ie

Tel.: +353 (0)57 867 0634



Juno Paints Ltd.

Registered in Dublin - Ireland No. 566158

Unit 1, Zone 5 Clonminam Business Park
Portlaoise, Co. Laois R32 W2RW

Phone: (+353) 0 57 867 0634
Contact: info@junopaints.ie

DUBLIN
Unit D21 - North City Business Park,
11 North Rd, Kildonan, Dublin, D11 RWP8

Phone: (+353) +353 1 834 1802
Contact: dublin@junopaints.ie

www.junopaints.ie