

**JUNO**

PAINT MANUFACTURERS SINCE 1927

# SILICATO

## MINERAL PAINT SYSTEM



**JUNO**

**SILICATO**

PINTURA MINERAL AL SILICATO

MINERAL SILICATE PAINT

Super respirable

Para superficies minerales

15L ± 150 ml

15L ± 150 m<sup>2</sup>

15L ± 150 m<sup>2</sup>

15L ± 150 m<sup>2</sup>

15L ± 150 m<sup>2</sup>

15L ± 150 m<sup>2</sup>

15L ± 150 m<sup>2</sup>

15L ± 150 m<sup>2</sup>

**Highly breathable mineral paint** with excellent substrate adhesion. Ideal for mineral surfaces and the renovation of heritage and protected buildings or monuments.



## What is a Silicate-Based System?

**A silicate-based coating system comprises a mineral primer and a mineral paint, both formulated with potassium silicate.**

In silicate coating systems, an insoluble mineral bond is formed with the substrate through a process known as “petrification”. This chemical reaction creates exceptional water vapour permeability whilst providing natural resistance to algae and mould growth, making silicate systems particularly suitable for the preservation and protection of mineral substrates.

In addition, silicate-based systems offer an environmentally responsible solution, being free from harmful substances and delivering outstanding long-term durability. Their extended service life helps reduce maintenance cycles and overall resource consumption over time.



**Breathable  
and vapour  
permeable**



**Self-cleaning**



**High UV  
and light  
fastness**



**Resistant  
to peeling  
and  
flaking**

### Key Benefits

- ✔ **Resistant to weathering and to the formation of mould, blistering, bubbling and flaking**
- ✔ **Dirt-resistant finish**
- ✔ **Long-lasting colour durability and stability**
- ✔ **Surface protection that helps prevent concrete deterioration**

## Suitable applications

- Mineral substrates such as render, concrete, and limestone or sandstone masonry.
- Conservation, restoration, and heritage works involving monuments, listed buildings, and historic centres.
- Finishing coat for mineral-rendered walls.
- High-quality wall and ceiling finishes.

## Unsuitable applications

- Over organic paints or enamels unless completely removed beforehand.
- On organic materials such as timber, PVC, plastic, or polyester.
- On ferrous or non-ferrous metals, glass, or ceramic tiles.

## Colour specification

*Silicate coatings utilise carefully selected mineral pigments to ensure excellent colour stability, UV resistance, and long-term façade durability. Due to the nature of universal tinting systems, only selected alkali-resistant pigments are compatible with potassium silicate binders. As a result, the available colour palette is limited to stable mineral and earth-based tones characteristic of traditional silicate systems, and bright or highly saturated colours cannot be achieved within a true silicate coating system.*

*Consult our Technical Department for colour guidance and project-specific recommendations.*

---

## Application method

### 1. Surface preparation

#### NEW SUBSTRATES

Surfaces must be clean, sound, dry, and free from laitance, salts, mould growth, dust, and all traces of contamination.

#### PREVIOUSLY PAINTED SUBSTRATES

Where existing mineral coatings are sound and well adhered, the product may be applied directly. In cases of surface chalking or friability, apply one coat of Mineral Primer (Ref. 75.302). Application over organic paints or enamel coatings is not recommended. Existing coatings should be fully removed where necessary, as the silicate paint must react directly with the mineral substrate to achieve proper bonding and consolidation.

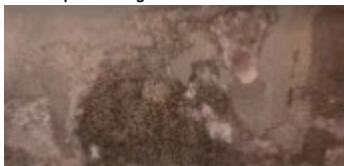
#### REMEDIAL TREATMENTS

##### MOULD AND BIOLOGICAL GROWTH

Thoroughly clean all affected areas and treat using Junoclean (Ref. 760.180). Rinse thoroughly with clean water and allow surfaces to dry fully before application. For areas prone to recurring growth, use anti-mould coatings or incorporate Misky-Misky additive (Ref. 79.597).

##### SALT EFFLORESCENCE

Remove deposits by thorough brushing, then wash and neutralise using a 10% hydrochloric acid or zinc sulphate solution. Rinse thoroughly with clean water and allow the substrate to dry completely before decoration.



## 2. System Application



### First Coat: Mineral Primer


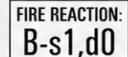

**Water-based fixing primer formulated with potassium silicate, providing excellent penetration and substrate consolidation.**

Recommended as a preparatory coat on weak, friable, or chalking substrates requiring consolidation, and for the stabilisation and preparation of mineral surfaces prior to decoration.

### Finishing Coats: Silicate Paint

**Highly breathable mineral silicate paint with outstanding adhesion to mineral substrates.**

Recommended for the finishing and protection of mineral surfaces and rendered masonry, offering excellent durability and resistance to blistering and flaking. Particularly suitable for conservation, restoration, and heritage works, including monuments, listed buildings, and historic centres.

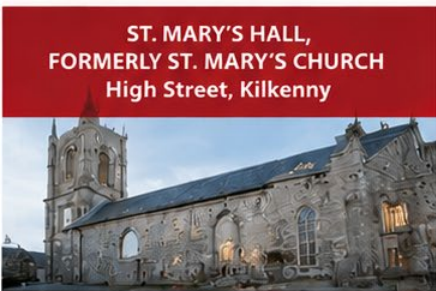
Matt	Finish	Matt
Water	Thinning	Water
Milky white (Ref. 75.302)	Colours	White / Base P (Ref. 75.362) JUNO FACADE COLOUR CHART See colours in web brochure
-	Touch dry	2-4 hours
-	Recoat	Min: 12 hours / Max: unlimited
4-8 m <sup>2</sup> /l	Coverage	8-10 m <sup>2</sup> /l
Preferably: Brush Also suitable for roller or spray	Application	Brush, roller or spray gun Airless
-	Certifications	   Formulated in accordance with DIN 18363
15 litres	Pack sizes	15 and 4 litres

**\* WARRANTY CONDITIONS:**

Warranties on the same product may vary depending on the colours and finish selected. The warranty relates to a Juno validated paint system applied in accordance with its instructions and does not extend to the application (consult conditions with the Technical Department).

# Heritage and architectural projects

A selection of heritage and architectural projects demonstrating bespoke coating solutions tailored to the requirements of each scheme.





**PAINT MANUFACTURERS SINCE 1927**



**JUNO PAINTS LTD.**  
Unit 1, Zone 5 Clonminam Business  
Park Portlaoise, Co. Laois  
R32W2RW  
Phone: (+353) 057 867 0634  
[info@junopaints.ie](mailto:info@junopaints.ie)  
[www.junopaints.ie](http://www.junopaints.ie)

**JUNO PAINTS CENTRAL HQ**  
Barrio Saconi, 10  
48950 Erandio (Bizkaia) SPAIN  
Tel.: +34 944 670 062 - Fax: +34 944 675 832  
[infoweb@juno.es](mailto:infoweb@juno.es)  
[www.junopaints.com](http://www.junopaints.com)  
[www.juno.es](http://www.juno.es)

